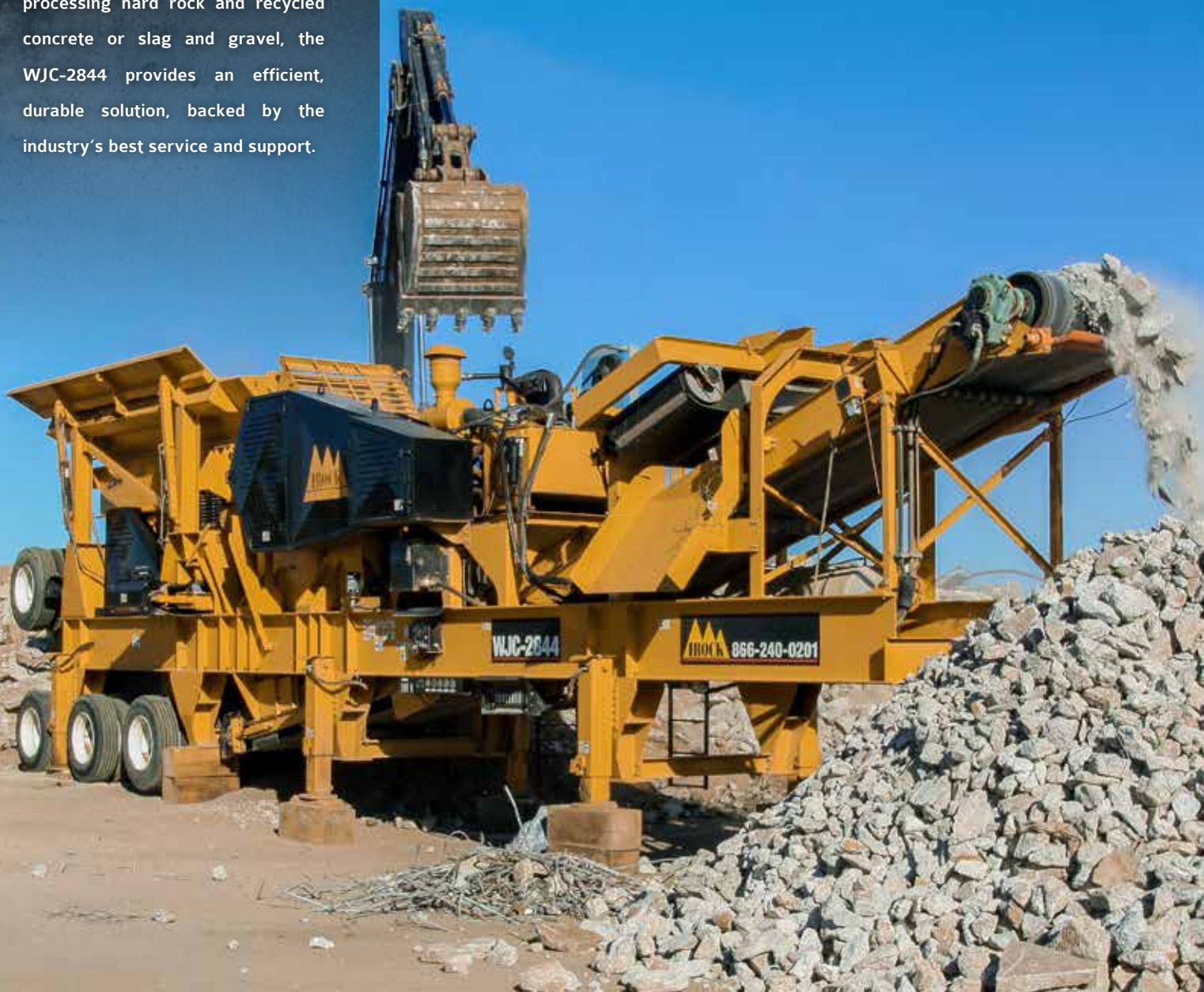




# WJC-2844

## THE **ULTIMATE** TOUGH CRUSHING SOLUTIONS

IROCK's WJC-2844 Wheeled Jaw Crusher offers the ideal solution for primary crushing applications. Whether the application requires processing hard rock and recycled concrete or slag and gravel, the WJC-2844 provides an efficient, durable solution, backed by the industry's best service and support.



WJC-2844



ENGINE	350-horsepower CAT® C9 ACERT (Tier 3)
PROCESSING CAPACITY	Up to 370 TPH
FEED HOPPER	10.5 cubic yards
STOCKPILING HEIGHT	11 feet
JAW SIZE	28 inches by 44 inches
WEIGHT	107,000 pounds



## FEATURES

A 10.5-cubic-yard hopper combined with the power of a 350-horsepower CAT® engine allows processing rates of up to 370 TPH.

A hydraulic adjusting chamber easily adjusts to produce a 2- to 6-inch product.

The 11-foot discharge height, one of the highest in the industry, allows not only superior stockpiling capabilities, but also the ability to pair it with screening units. An optional self-cleaning magnet extracts metals from processed material.

Six hydraulic outriggers offer fast and easy off-loading and leveling of the plant to complete setup in less than an hour.

**IROCK** 5531 CANAL ROAD, VALLEY VIEW, OH 44125

Phone: 866-240-0201 • Fax: 440-735-4974 • Email: [sales@irockcrushers.com](mailto:sales@irockcrushers.com)  
[www.irockcrushers.com](http://www.irockcrushers.com)

IROCK™ is a trademark of IROCK Crushers, LLC.  
CAT® is a registered trademark of Caterpillar Inc.